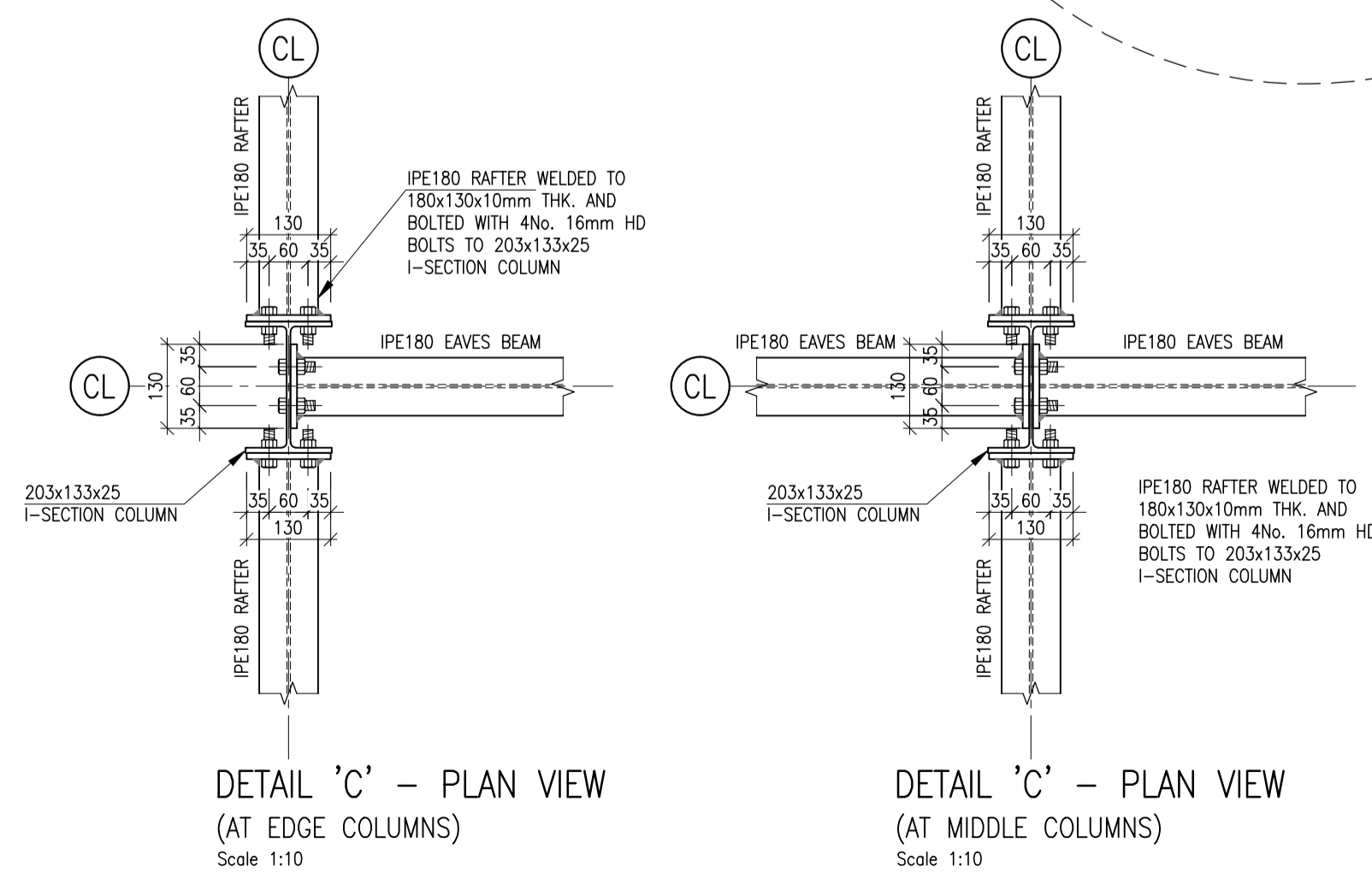
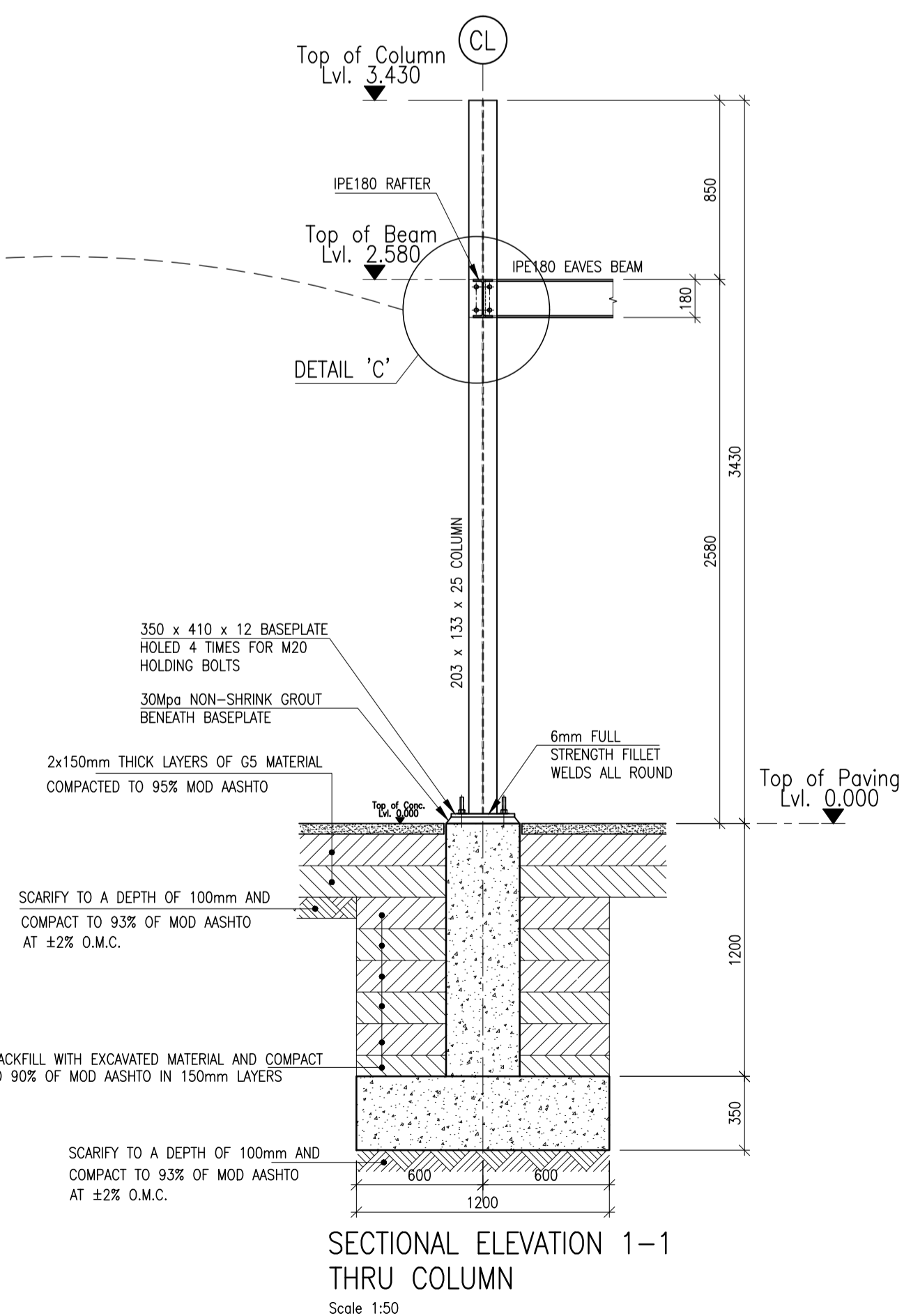
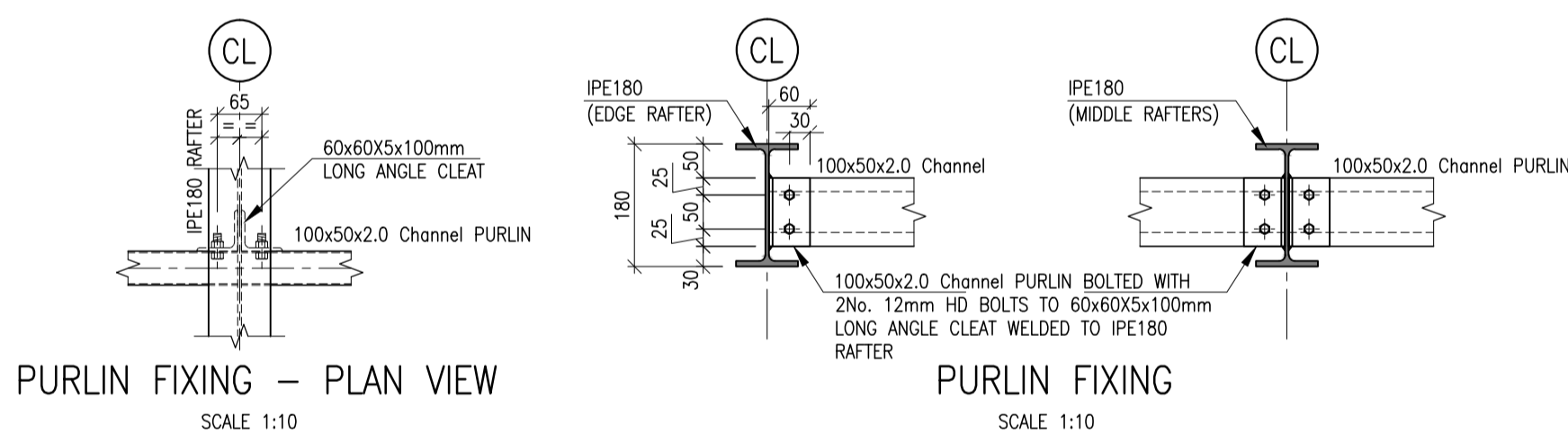
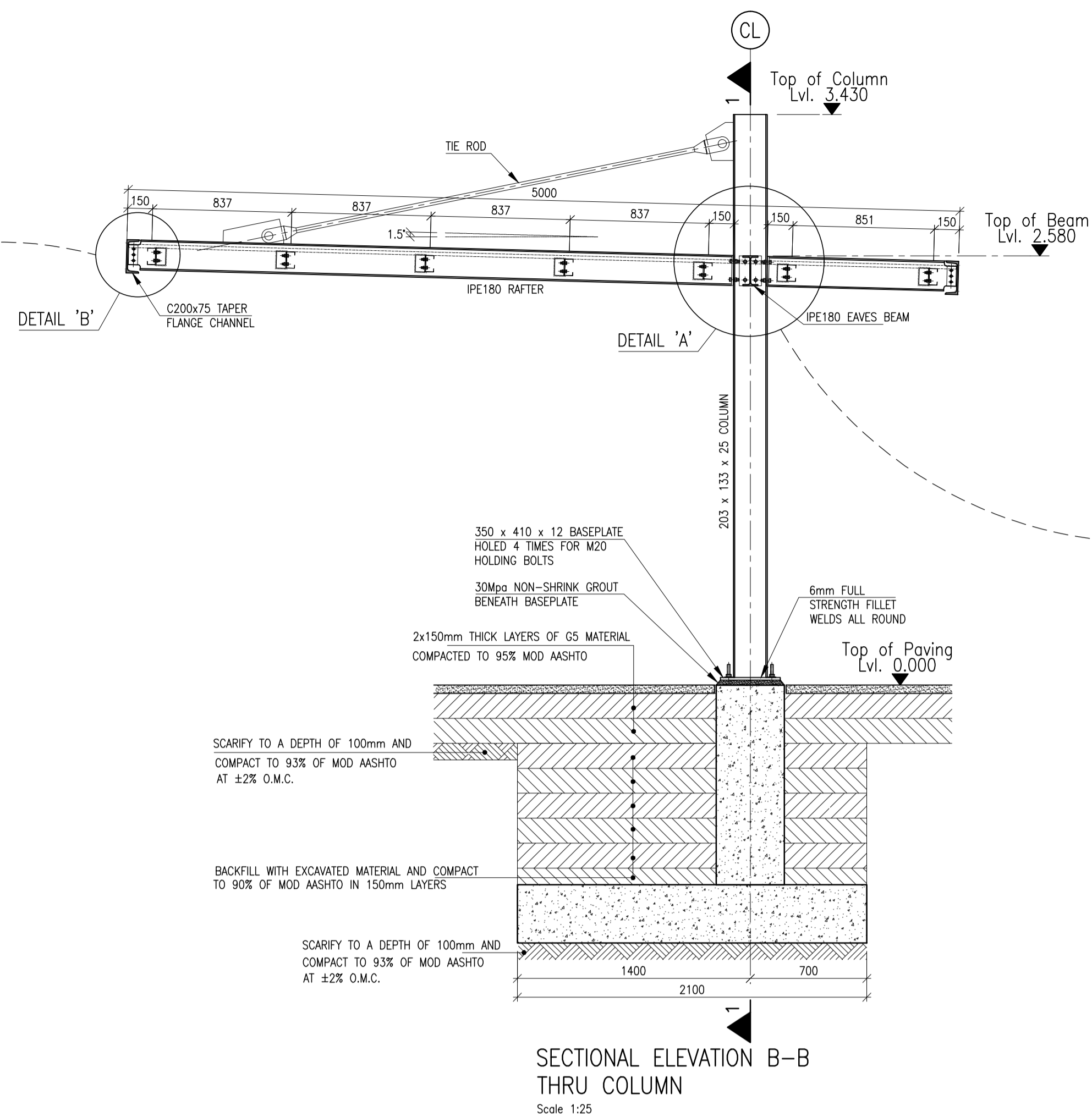


THESE NOTES ARE SUPPLEMENTED BY AND SHALL BE READ IN CONJUNCTION WITH THE CONTRACT SPECIFICATIONS.

THIS DRAWING SHOULD BE READ IN CONJUNCTION WITH ALL THE RELEVANT ENGINEERING AND ARCHITECTURAL DRAWINGS.

DRAWING MUST BE CHECKED FOR ANY ERRORS, OMISSIONS AND AMBIGUITIES AND REFERRED TO THE ENGINEER FOR CLARIFICATION PRIOR TO COMMENCING CONSTRUCTION.

- ALL DIMENSIONS ARE IN MILLIMETRES.
- ALL LEVELS ARE IN METRES.
- FIGURED DIMENSIONS TO BE USED IN PREFERENCE TO SCALING.



ACCOUNTS PROVIDED		

B	28.04.22	GC	ISSUED FOR TENDER
A	MAR. '22	T&B	ISSUED FOR STAGE 3 COORDINATION
REVISION	DATE	INITIAL	COMMENT

EMPLOYER: 



SOUTHERN AFRICAN
DEVELOPMENT COMMUNITY

DO NOT

SADC STANDBY FORCE
REGIONAL LOGISTICS DEPOT
AT RASESA
BOTSWANA



BUILDING: 74 - GARPORT

31-CARPORT

DRAWING TITLE:

STEEL COLUMNS

STEEL COLUMNS
AND ROOF DETAILS

AND ROOF DETAILS

TYPICAL SECTIONS AND DETAILS

TYPICAL SECTIONS AND DETAILS

DESIGNED	G.C.	DRAWN	T.d.B.
----------	------	-------	--------

DATE	APR. 2022	DATE	APR. 2022
------	-----------	------	-----------

CHECKED	G.C.	SCALE
---------	------	-------

DATE	APR. 2022	AS SHOWN
------	-----------	----------

RAWING No.	REV
------------	-----

DRAWING NO.	REV.
PL 013 / 31 / 000	A

BL 813/31/S02	A
---------------	---
